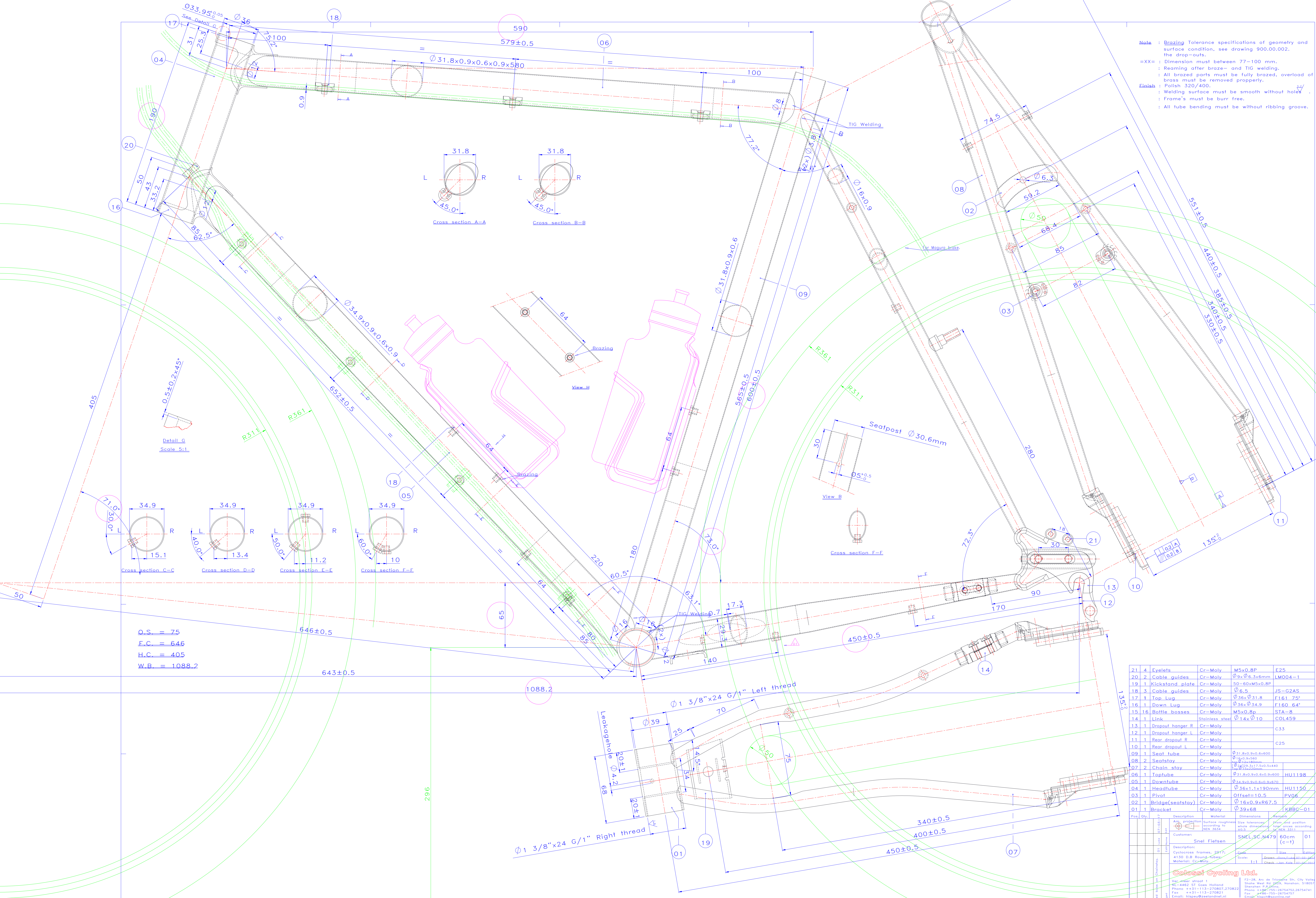


Note : Brazing Tolerance specifications of geometry and surface condition, see drawing 900.00.002, the drop-outs.
 =XX= : Dimension must between 77-100 mm.
 : Reaming after braze- and TIG welding.
 : All brazed parts must be fully brazed, overload of brass must be removed properly.
Finish : Polish 320/400.
 : Welding surface must be smooth without holes.
 : Frame's must be burr free.
 : All tube bending must be without ribbing groove.



O.S. = 75
 F.C. = 646
 H.C. = 405
 W.B. = 1088.2

Part No.	Description	Material	Dimensions	Notes
21	Eyelets	Cr-Moly	M5x0.8P	F25
20	Cable guides	Cr-Moly	Ø 9 x Ø 6.3x6mm	LM004-1
19	Kickstand plate	Cr-Moly	50-60xM5x0.8P	
18	Cable guides	Cr-Moly	Ø 6.5	JS-G2AS
17	Top Lug	Cr-Moly	Ø 36 x Ø 31.8	F161 75°
16	Down Lug	Cr-Moly	Ø 36 x Ø 34.9	F160 64°
15	Bottle bosses	Cr-Moly	M5x0.8p	STA-8
14	Link	Stainless steel	Ø 14 x Ø 10	COL459
13	Dropout hanger R	Cr-Moly		C33
12	Dropout hanger L	Cr-Moly		
11	Rear dropout R	Cr-Moly		C25
10	Rear dropout L	Cr-Moly		
09	Seat tube	Cr-Moly	Ø 31.8x0.9x6x600	
08	Seat stay	Cr-Moly	Ø 16x0.9x600	
07	Chain stay	Cr-Moly	Ø 16x0.9x600	
06	Top tube	Cr-Moly	Ø 31.8x0.9x600	HU1198
05	Down tube	Cr-Moly	Ø 31.8x0.9x600	HU1150
04	Head tube	Cr-Moly	Ø 36x1.1x190mm	
03	Pivot	Cr-Moly	Offset=10.5	PV06
02	Bridge(seatstay)	Cr-Moly	Ø 16x0.9xR67.5	
01	Bracket	Cr-Moly	Ø 39x68	KBBC-01

Colost Cycling Ltd.
 F2-28, Arc de Triomphe Str, City Valley
 NL-4462 ST Coes Holland
 Phone +31-113-270801,270821
 Fax +31-113-270821
 Email: nlsp@colost.nl
 All rights reserved. No part of this drawing may be reproduced or transmitted in any form without permission in writing from High-spec Europe.